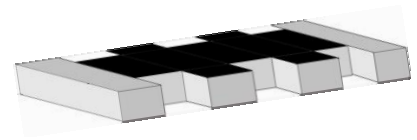


2.4 GHz Chip Antenna

Application

WLAN, 802.11b/g, Bluetooth, etc...



Features

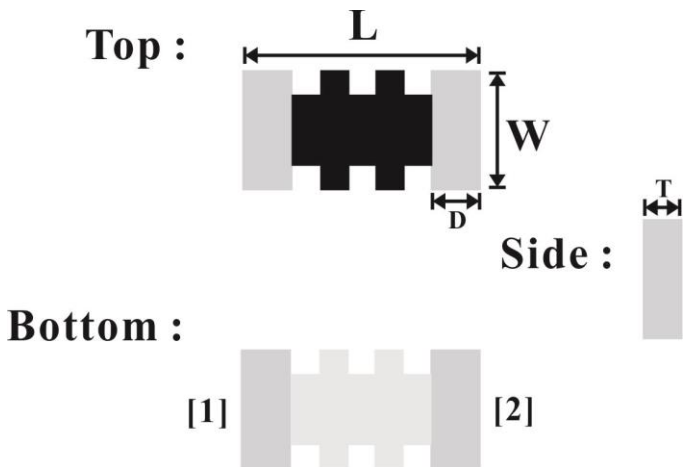
SMD, high gain, high reliability, ultra- impact, omni-directional...

Parts Number Explanation

AAN 3216 H2 P 2G45 - T1
 (1) (2) (3) (4) (5) (6)

(1) Product Type	Chip Antenna
(2) Size Code	3.2 mm× 1.6 mm
(3) Type Code	H2
(4) Packing	Paper Tape
(5) Frequency	2.45 GHz
(6) Type Code	T1

Type Dimension



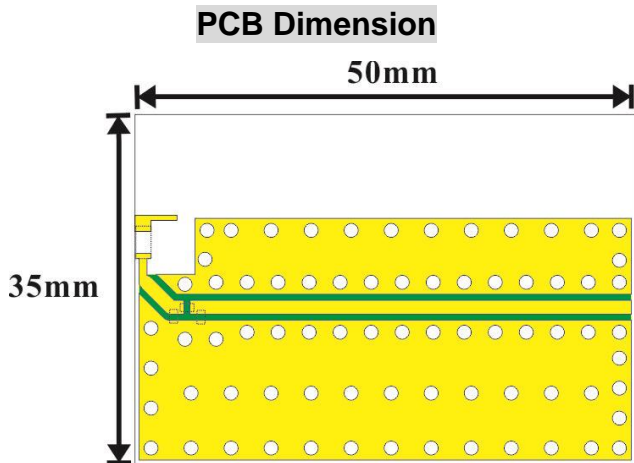
Dimension (mm)	
L	3.20±0.15
W	1.60±0.15
T	0.55±0.10
D	0.60±0.15

NO.	Terminal Name
[1]	Feeding / Soldering
[2]	Soldering / Feeding

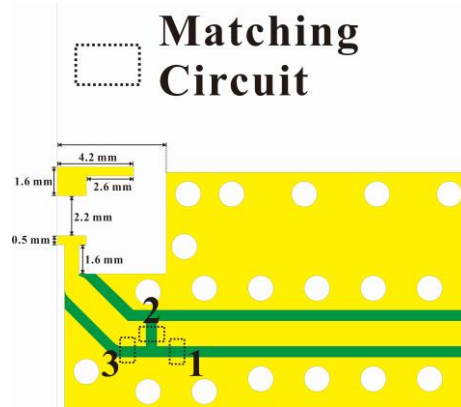
Electrical Specifications

Working Frequency Range	2400 ~ 2485 MHz
Peak Gain	2.75 dBi
Impedance	50 Ohm
Return loss	10 dB (Min)
Polarization	Linear
Azimuth Beamwidth	Omni-directional
Operation Temperature	-40 ~ 85 °C

Evaluation Board Reference – Regular Layout

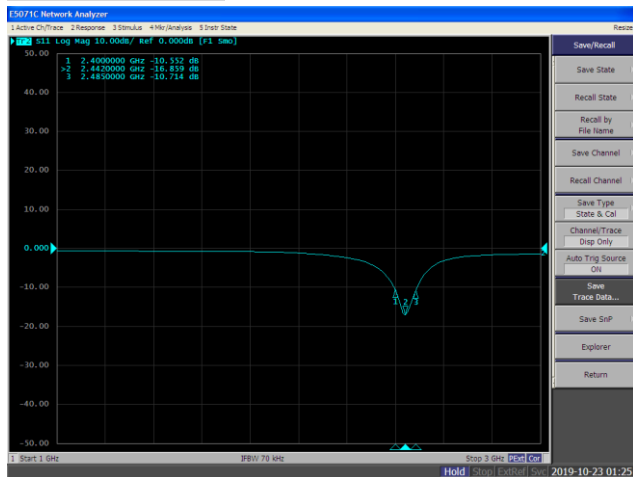


Antenna Layout Reference



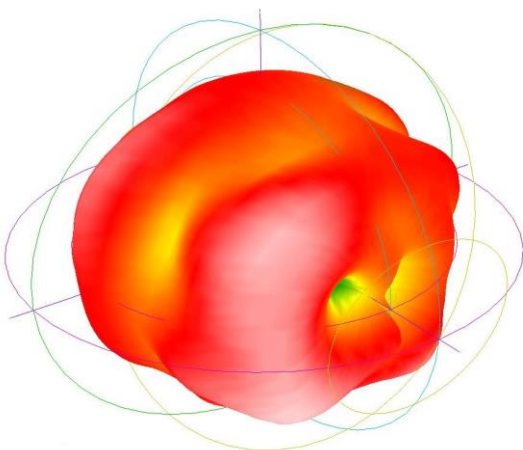
Electrical Characteristics

Return Loss



Frequency (MHz)	Return Loss (dB)
2400	10.55
2442	16.85
2485	10.71

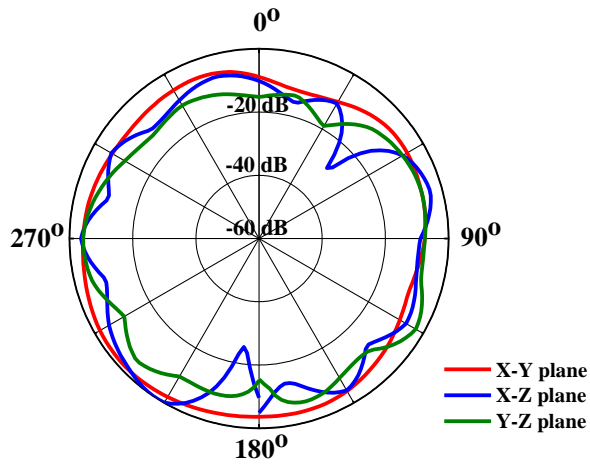
3D Radiation



Frequency	2475 MHz
Peak Gain	2.45 dBi
Average Gain	-2.49 dBi
Efficiency	56.31 %

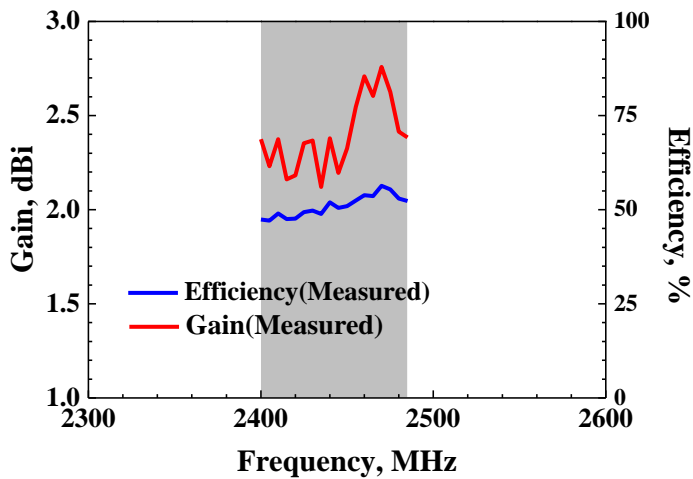
2D Radiation

Frequency : 2470 MHz



Pattern	Test Plane	Peak Gain (dBi)	Peak Gain Angle	
1	Blue	X-Y	-2.207	250°
2	Green	X-Z	-0.247	202°
3	Red	Y-Z	-0.138	230°

Peak Gain & Efficiency



Frequency (MHz)	Gain (dBi)	Efficiency (%)
2400	2.37	47.38
2440	2.38	51.95
2480	2.41	52.98

文件修訂記錄

申請日期	版次	修訂內容	申請者	修訂頁數
2019/10/24	01	新制文件	Katrina	4